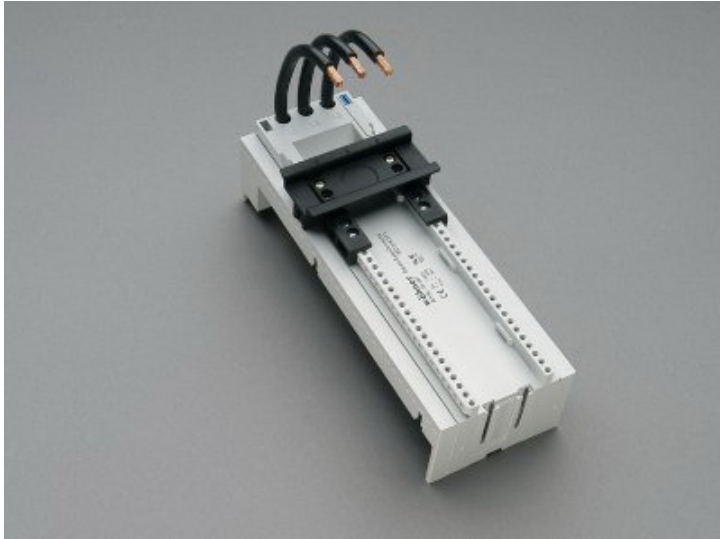


## busbar adapter 63 A (32457)



The picture may show a similar product.

### Description

Part No.: **32457 000**

EQUES® 60Classic

busbar adapter 63 A

1 adjustable mounting rail

72 x 200, with leads AWG 8 (10 mm<sup>2</sup>)

for busbars 12, 15, 20, 25, 30 x 5, 10 and section busbars

### System

60Classic

Product group 05

Subgroup 24

pack size 4

EAN 4021267324575

ECLASS 6.1 27370304  
ECLASS 7.1 27370304  
ETIM 4.0 EC001531  
ETIM 5.0 EC001531

## Approvals

### Standards

IEC 61439-1:2020  
UL 508

### Approvals

CSA, UL



for UL feeder circuits >250V

type number: EEC6063-L

UL file: E123577, UL category (for USA): NMTR <https://www.ul.com>

UL file: E123577, UL category (for Canada): NMTR7 <https://www.ul.com>

CSA file: 110285, CSA class: 3211-37 <https://directories.csa-international.org>

CCC approval: no certification required

## Technical data

### Details IEC

#### Standards

IEC 61439-1:2020

#### Electrical data IEC

rated current (IEC): 63 A

rated voltage (IEC) AC: 690 V

rated isolation voltage  $U_i$  AC: 800 V

rated surge voltage  $U_{imp}$ : 6 kV

power dissipation of the article:

The power dissipation at a typical load of 80 % results to 4.4 W.

(The power dissipation at full load would be 6.9 W.)

## Details UL

### Standards

UL 508

for UL feeder circuits >250V

### Electrical data UL

rated current (UL): 65 A

rated voltage (UL) AC: 600 V

rated frequency (UL): 50 / 60 Hz

SCCR unprotected max.: 7.5 kA

3 cycles (without OPD) @ 600 V AC

SCCR protected max.: 100 kA

SCCR: 100 kA with JDDZ fuse Class CC, CF, J or T 60 A / 600 V AC

65 kA with any NKJH/7 Comb. Motor Controller Type E 65 A / 480 V AC

65 kA with any DIVQ/7 circuit breaker 60 A / 480 V AC

## Mechanical data

W x H x D: 72 x 200 x 63

weight: 47.6 kg/100

poles: 3-pole

for busbars: 12, 15, 20, 25, 30 x 5, 10 and section busbars

## Application notes

There must be a clearance of at least 12 mm above the article to remove it from the busbar system.

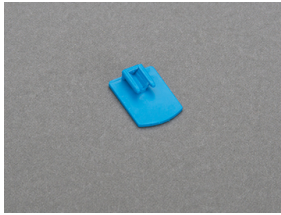
For compact mounting of complete motor circuits with commercially available switchgear and safe mechanical and electrical connection to the busbar system.

the short-circuit capacity of the combination of adapter and motor starter depends on the motor starter

for UL feeder circuits >250V

## Accessories

accessories for mounting

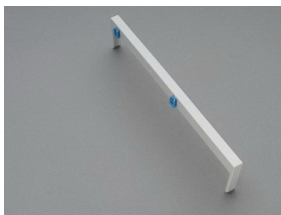


**32969 000**  
mounting rail end stop

further accessories



**32950 000**  
mounting rail 72 mm  
for busbar adapters



**32963 000**  
side-mounted module for busbar adapters  
attachable to both sides  
9 x 200  
for: EEC60..

<https://pim.woehner.de/EN/INT/1000042991>